

## How to reconnect biodiversity across motorways?

Practical experiences of establishing ecological hinterland connections of fauna passages in a highly fragmented northern german landscape

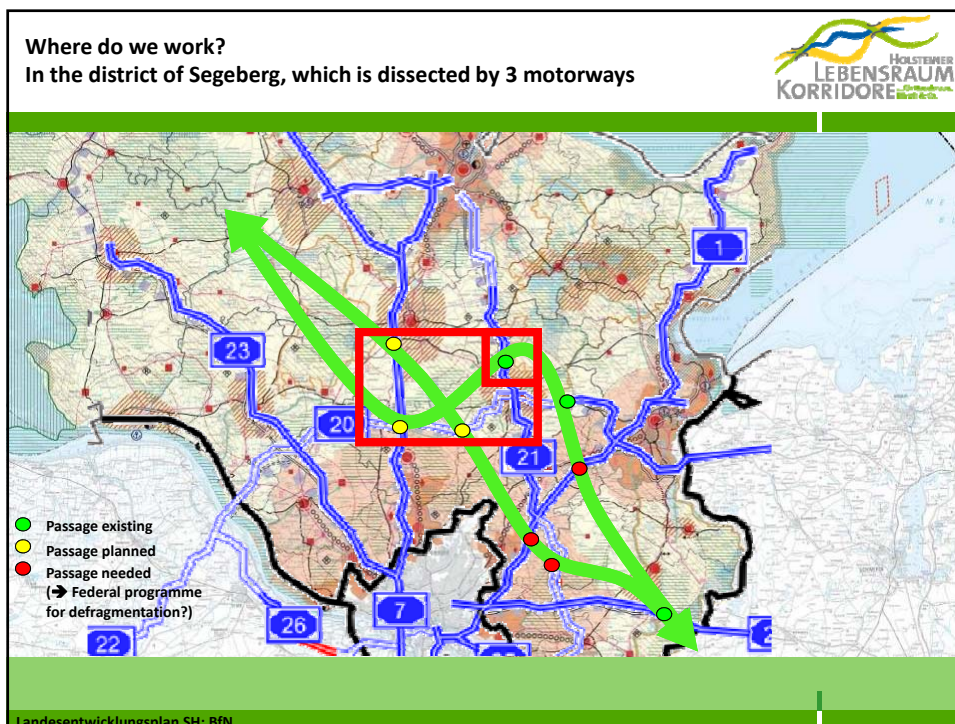
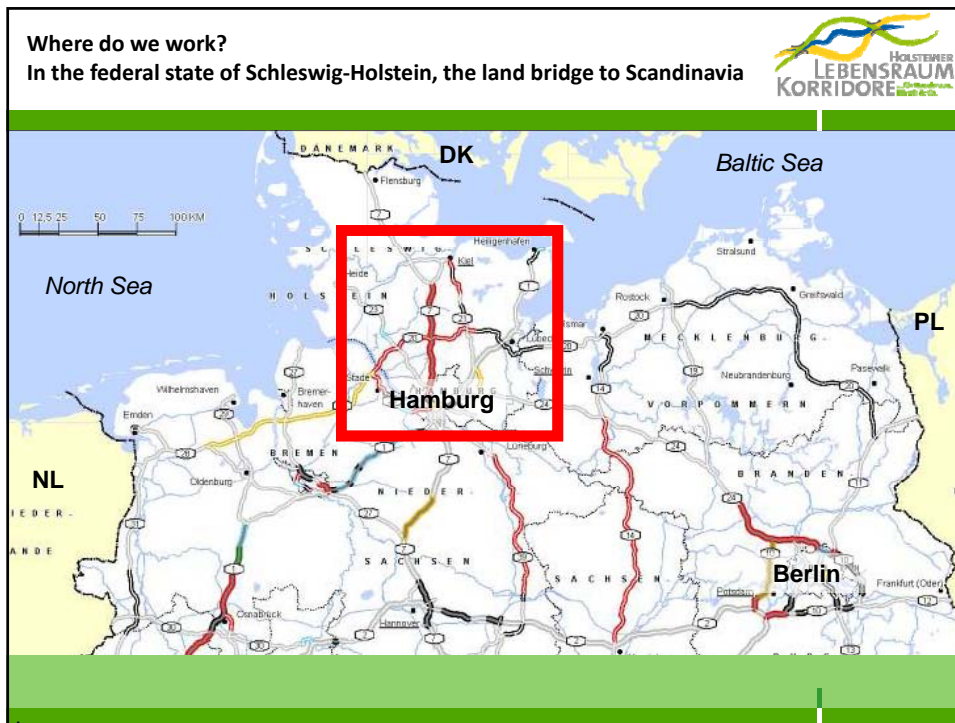


Björn Schulz<sup>1</sup>, H. Reck<sup>2</sup>, M. Böttcher<sup>3</sup>. <sup>1</sup> Schleswig-Holstein State Foundation for Nature Conservation, <sup>2</sup> University of Kiel, <sup>3</sup> Federal Agency for Nature Conservation.

With the projects' partners C. Lange, K. Müller, H. Nissen, A. Huckauf, C. Winkler, J. Krütgen, T. Jacobi, C. Herty, U. Steffen, T. Reinwald, A. Winter, U. Kröger, J. Hellwig, V. Seifert, ...

### Holstein Habitat Corridors Reconnection of habitats for dormouse, deer & Co.

- Where do we work?
- What is our plan?
- How do we tell different species where the fauna passage is?
- Do we have any success? (targets and preliminary results)
- What will be done in the future?

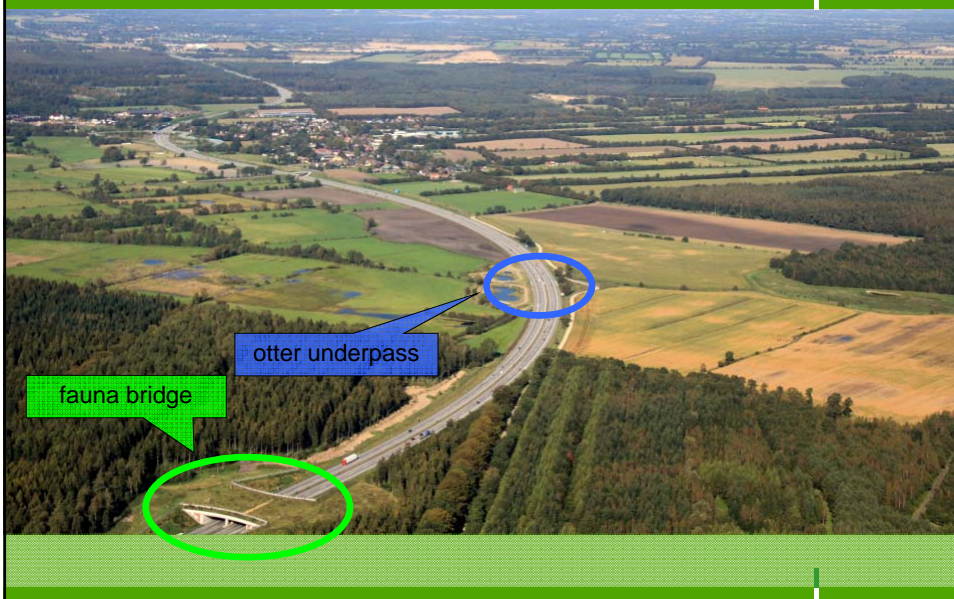




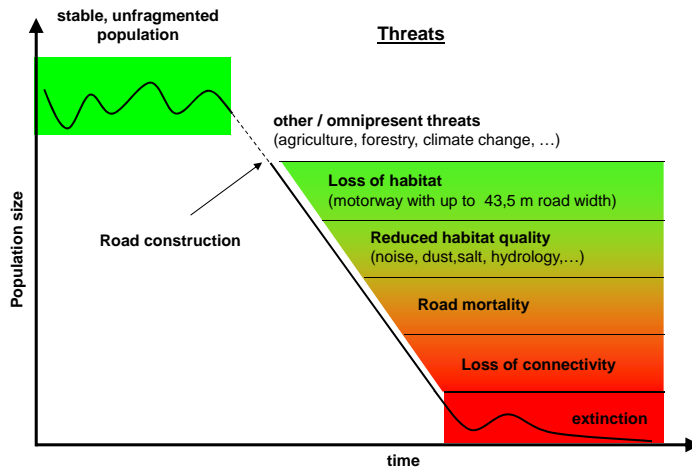
Where do we work?  
Intensive agricultural landscape, few forests and fewer nature reserves...



Where do we work?  
...but with possibilities to overcome barriers and with good partners!

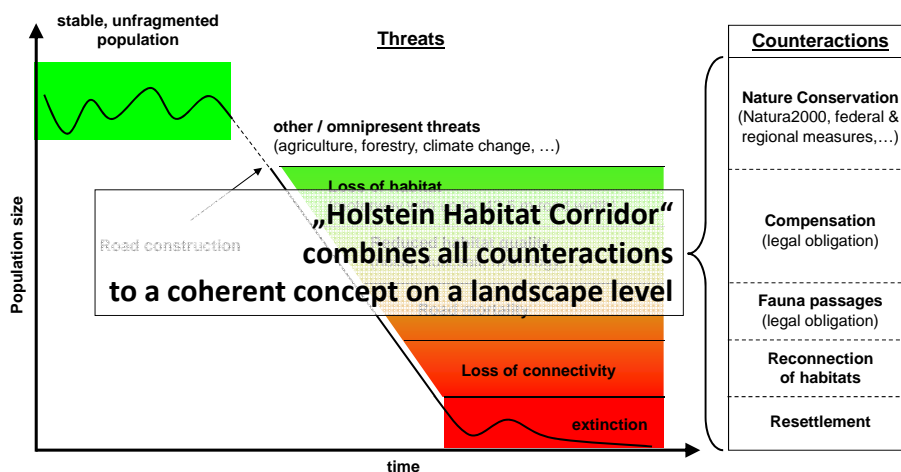


## What is our plan?



after Kaule


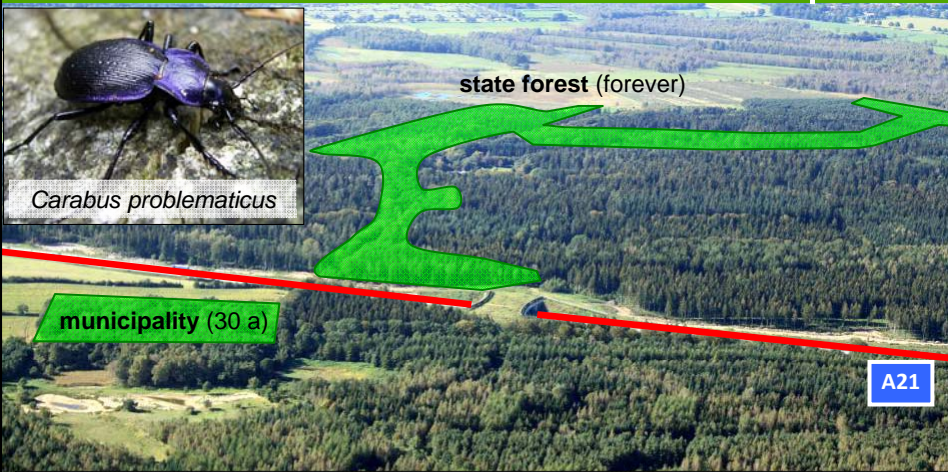
## What is our plan?



after Kaule



How do we tell species of native forests where the fauna passage is?

*Carabus problematicus*


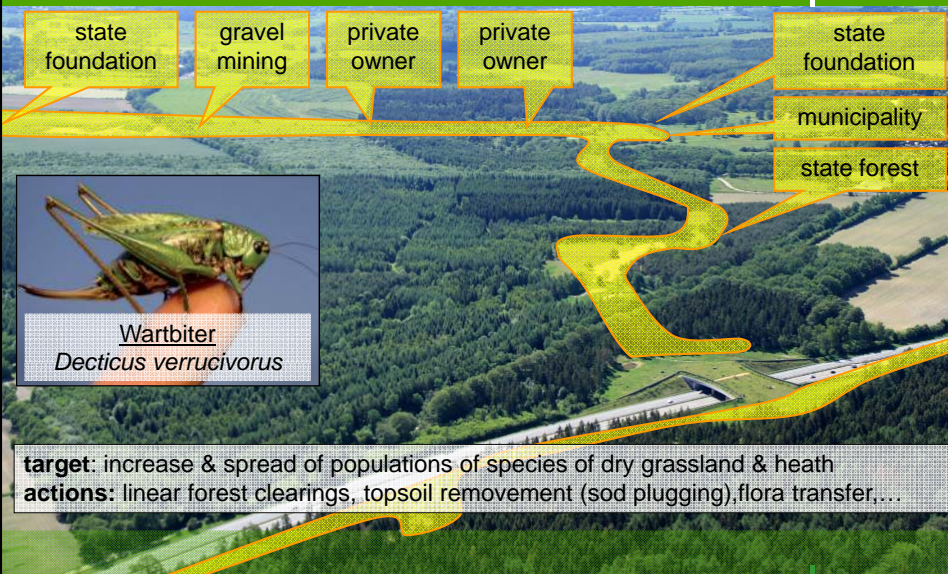
state forest (forever)

municipality (30 a)

A21

**target:** increase & spread of populations of „native“-forest-species across bridge  
**action:** 20 ha of surrounding forest were selected (criteria: age, species, location), partly reconstructed (all foreign trees removed), discarded from forestal usage

How do we tell species of dry grassland where the fauna passage is?

state foundation

gravel mining

private owner

private owner

state foundation

municipality

state forest

A21

*Wartbiter*  
*Decticus verrucivorus*

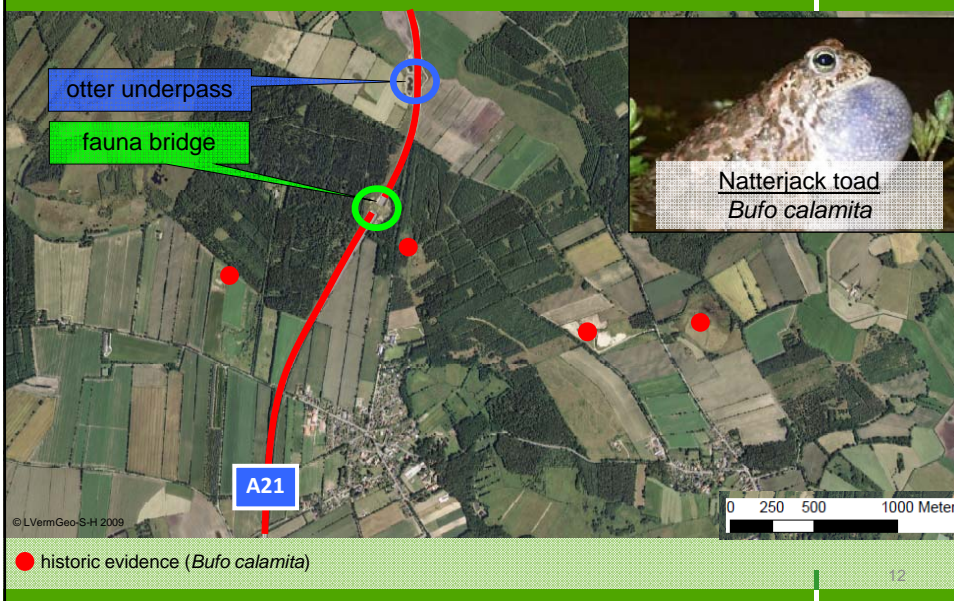
**target:** increase & spread of populations of species of dry grassland & heath  
**actions:** linear forest clearings, topsoil removalment (sod plugging), flora transfer, ...



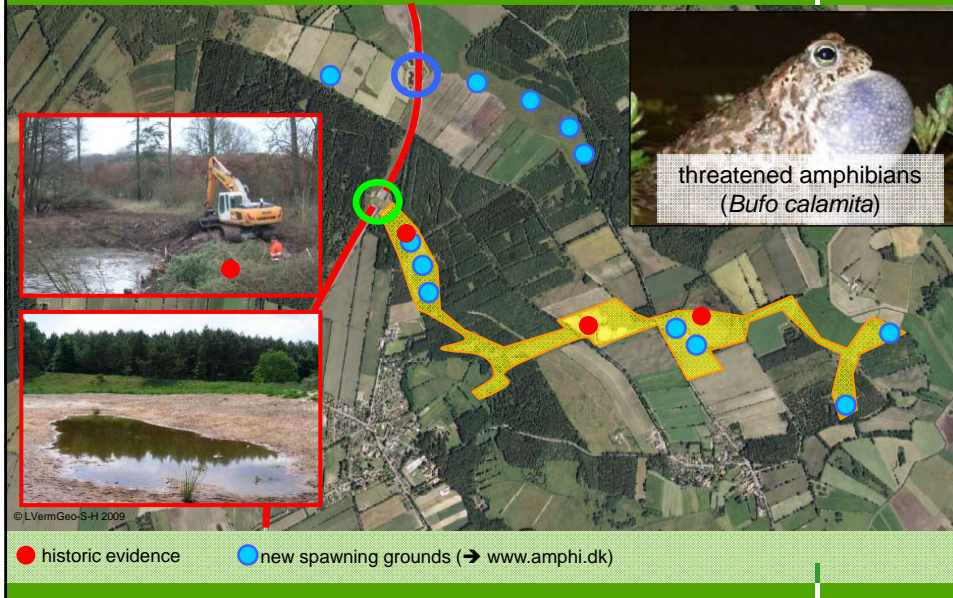
How do we tell species of dry grassland where the fauna passage is?



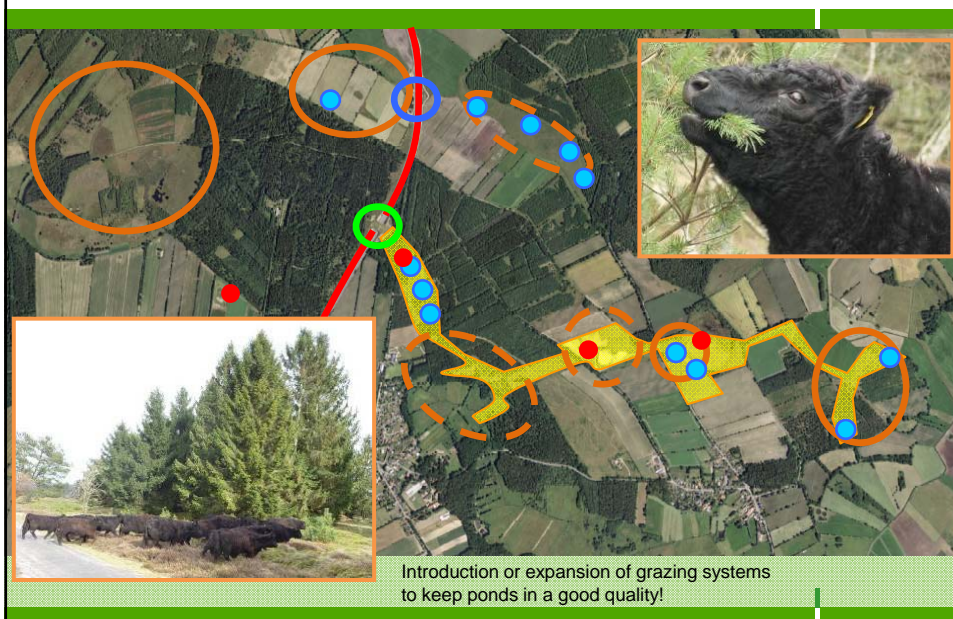
How do we tell species of ponds where the fauna passage is?



How do we tell species of **ponds** where the fauna passage is?

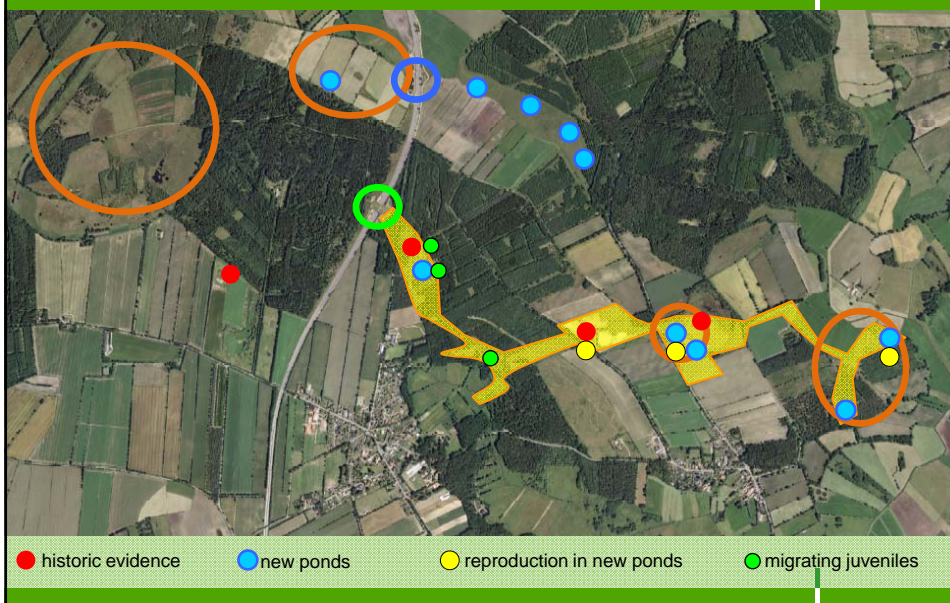


How do we tell species of **ponds** where the fauna passage is?

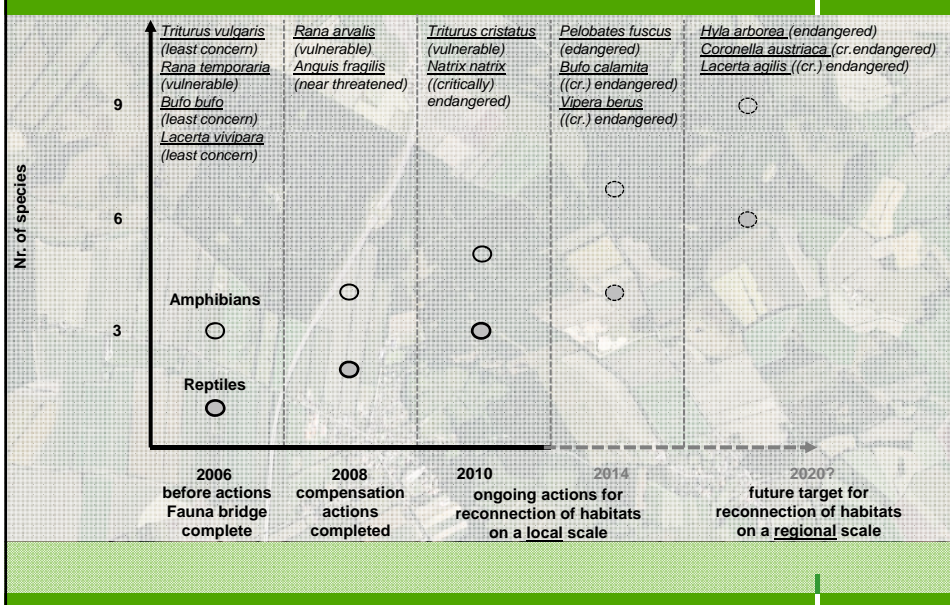




How do we tell species of **ponds** where the fauna passage is?



First results & future prospects for the reconnection amphibians & reptiles  
Species found at fauna passages during time





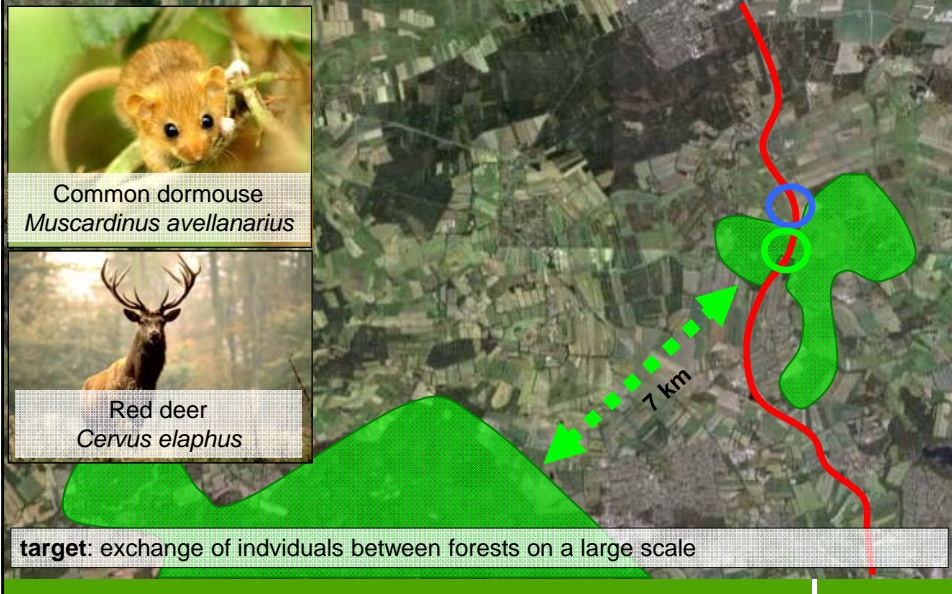
How do we tell **arboreal & large mammals** where the passage is?



Common dormouse  
*Muscardinus avellanarius*



Red deer  
*Cervus elaphus*



**target:** exchange of individuals between forests on a large scale

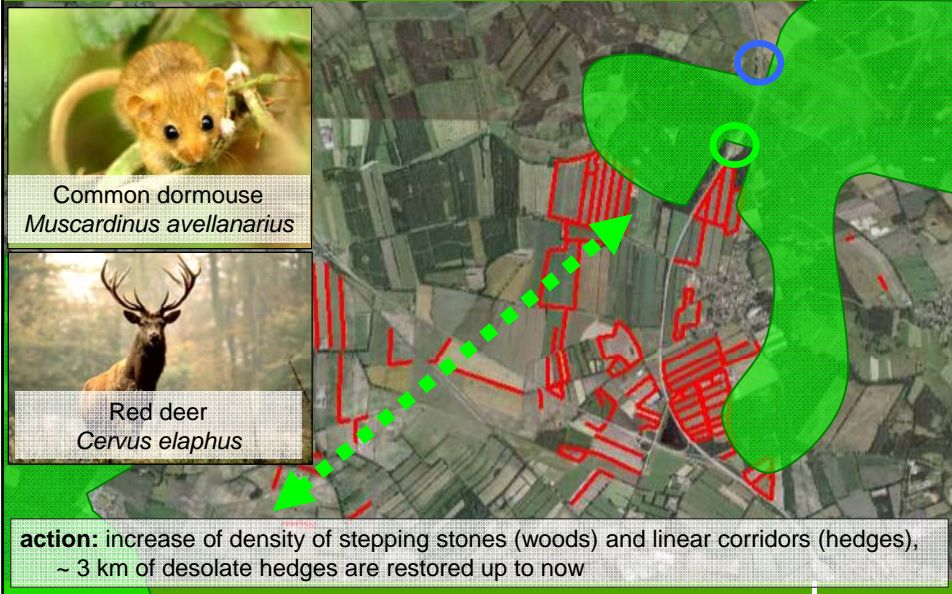
How do we tell **arboreal & large mammals** where the passage is?



Common dormouse  
*Muscardinus avellanarius*

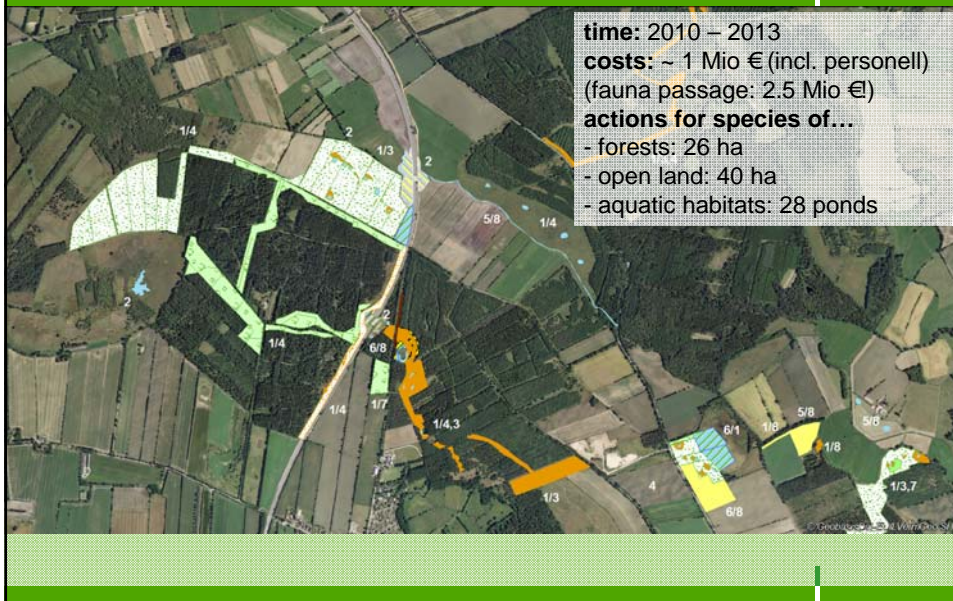


Red deer  
*Cervus elaphus*



**action:** increase of density of stepping stones (woods) and linear corridors (hedges),  
~ 3 km of desolate hedges are restored up to now

Overview **about coherent actions** for local reconnection



How will we tell species, where the **next fauna passages** are?

